



GYPSUM TRANSFER MODIFICATIONS AND SUBMERGED SCRAPER CONVEYER INSTALLATION

Cross Generating Station - Santee Cooper, SC

Fagen, Inc. provided predominantly self perform multi-craft construction services involving the ash handling system of the 600 MW Unit 4 boiler. Following demolition of the entire lower end of this boiler, a new Clyde Bergemann submerged scraper conveyer was installed.

Activities involving the gypsum handling systems were performed in preparation for the installation of a new water treatment plant. This required removing much of the original gypsum plant, including conveyers and silos.

Notice to Proceed - November 2016

Substantial Completion - May 2017



ZERO
LOST TIME ACCIDENTS

FAGEN
INC.

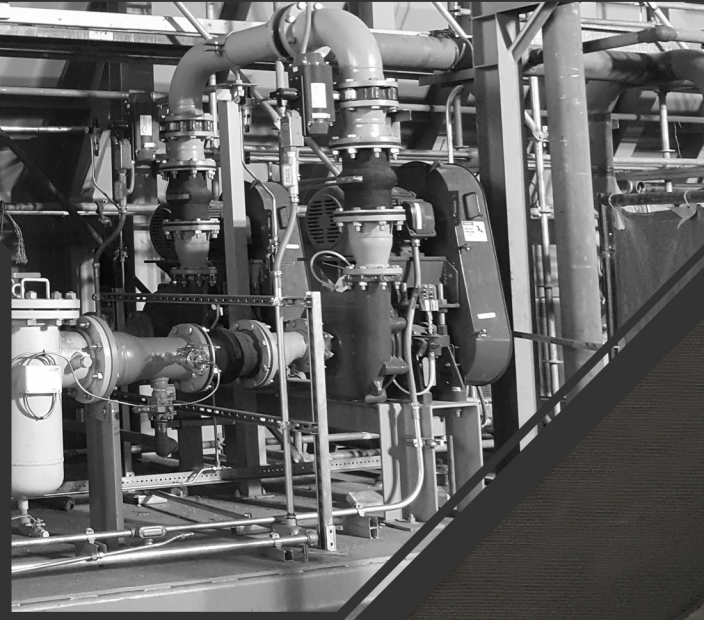
Team is what it takes.®

www.fageninc.com - 320.564.3324

Scope Of Work

General Contractor Scope Included:

- Concrete demolition and installation of new slab.
- Submerged scraper conveyer installation including installation of hoppers, piping, pumps, heat exchangers, blowers, and hydraulics.
- Removal of twelve large wet ash tanks.
- Gypsum system control re-wiring and re-powering to a new power distribution building.
- Steel lime silos removal.
- New lime silo foundation installation.



www.fageninc.com - 320.564.3324

**FAGEN
INC.**

Team is what it takes.®